

50/40 Amp Automotive Plug-In / PCB Power Relay

PC792C



FEATURES

- Most popular automotive relay
- 1 A, 1 C & 1U contact forms available
- Contact switching capacity up to 100 Amps
- 50 Amps continuous carrying capacity
- Up to 125 degrees C operating temperature
- Internal diodes or resistors available
- Sockets available from Picker Components
- **Now available Lead Free & RoHS Compliant**

CONTACT RATINGS

Contact Form	1 Form A or 1 Form C	
	Normally Open	Normally Closed
Max Switching Current	Make 100 Amps	Make 45 Amps
	Break 50 Amps	Break 40 Amps
Max. Continuous Current	60 Amps (at 20 degrees C)	40 Amps (at 20 degrees C)
	50 Amps (at 85 degrees C)	40 Amps (at 85 degrees C)
Max. Continuous Current 1 Form U	2 X 30 Amps (at 20 degrees C) 2 X 25 Amps (at 85 degrees C)	
Max. Switching Voltage	75 VDC	
Minimum Load	0.1 A @ 12 VDC	

CONTACT DATA

Material	Ag3SnInO (Silver Tin Indium Oxide)	
Initial Contact Resistance	100 milliohms max @ 0.1A, 6VDC	
Service Life	Mechanical	1 X 10 ⁷ Operations
	Electrical	1 X 10 ⁵ Operations

CHARACTERISTICS

Operate Time	7 ms. typical
Release Time	2 ms. typical
Insulation Resistance	100 megohms min, at 500VDC, 50%RH
Dielectric Strength	500 Vrms, 1 min. between coil and contacts
Shock Resistance	20 g, 11ms, functional; 200 g, destructive
Vibration Resistance	DA 1.27 mm, 10 - 40 Hz; 40-70 Hz: 5 g; DA 0.5mm, 70-100 Hz; 100-500 Hz: 10 g.
Drop Resistance	1 Meter height drop on concrete in final enclosure
Power Consumption	1.6 W approx.
Ambient Temperature Range	-40 to 85 degrees C operating, -40 to 125 for class F
Weight	35 grams approx.

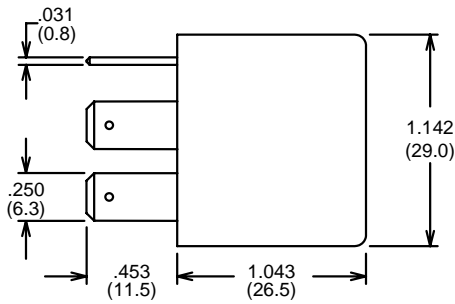
ORDERING INFORMATION

Example:	PC792C	-1C	-C1	-12	S	-RN	-X
Model							
Contact Form	1A, 1C or 1U (2 X 1A, 87 & 87b isolated)						
Case Style	C: Plug-In; P: PCB; C1: Plastic Bracket; C2: Metal Bkt						
Coil Voltage							
Enclosure:	C: Dust Cover, S: Sealed case K: Skirted Case, W: Weatherproof Case						
Parallel Component	Nil: None; D: Diode; R: Resistor; N: Nickle Plated Terminals						
RoHS Compliant:	Nil: Not RohS, -X: RoHS Compliant						

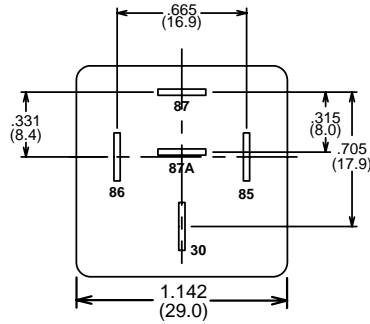
COIL DATA

Coil Voltage	Resistance ohms $\pm 10\%$	Must Operate Voltage Max. (VDC)	Must Release Voltage Min. (VDC)	Continuous Voltage Max. (VDC)
6	20	3.9	0.6	10.1
12	80	7.8	1.2	20.5
24	320	15.6	2.4	39.1

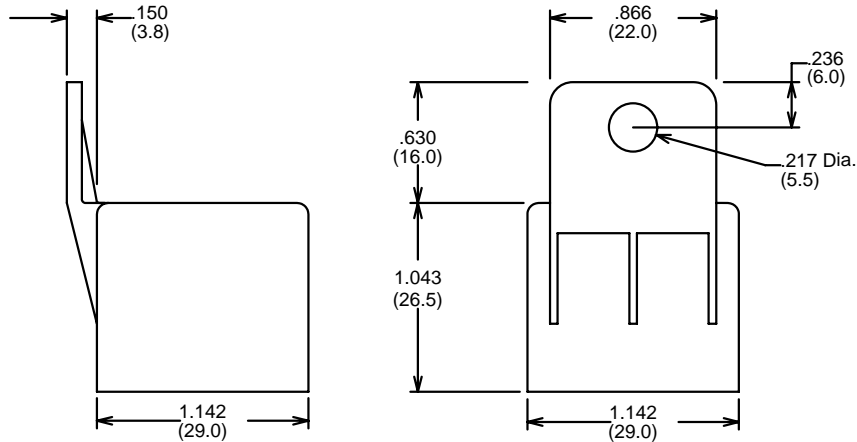
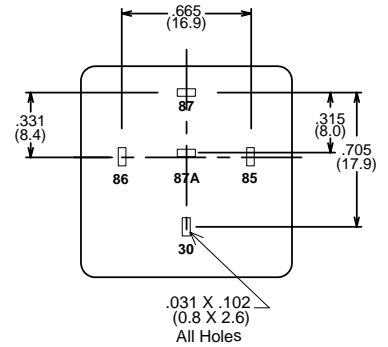
Plug-In Type
Plug-In Case (C) and PCB Case (P)



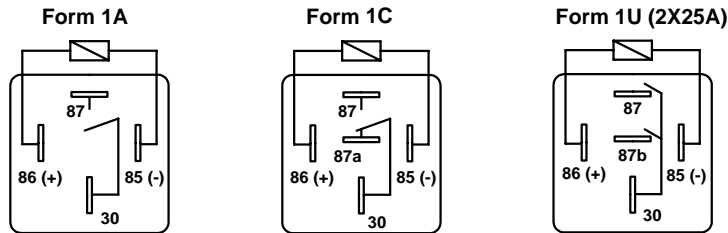
Dimensions in Inches (millimeters)



Bottom View
PC Board Layout



Molded Plastic Bracket (C1)



Wiring Diagrams

Notes:
Tolerances $\pm .010$ unless otherwise noted
Maximum make current refers to inrush of a lamp load
In 85 degree C ambient reduce maximum coil voltage to 72%



3220 Commander Drive, Suite 102, Carrollton, Texas 75006

Sales: Call Toll Free (888) 997-3933 Fax (818) 342-5296 email: pickerwest@sbcglobal.net URL: pickercomponents.com